

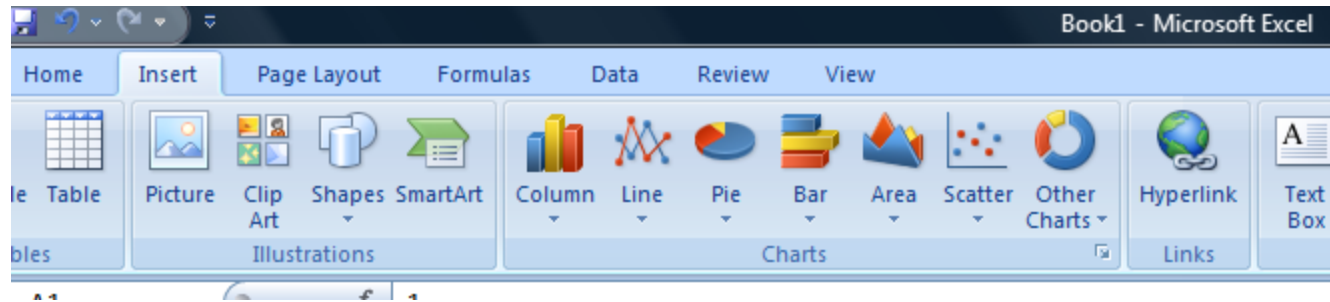
Week 2 - Lab 1: Charts and Visual Design Rules

Introduction

- Creating a chart using Chart Wizard
- Customizing a chart
- Good chart design principles

Chart Wizard (1)

- **Step 1:** In the top menu bar, select **Insert**. You should now see a group of icons labeled **Charts**



- **Step 2:** Select the data to be included in the chart

	A	B
1		Budget
2	2004	12
3	2005	13.5
4	2006	15
5	2007	14.2
6	2008	17
7		

Chart Wizard (2)

- **Step 3:** Select a chart type. A drop down menu should appear showing the different types of charts available. Select one of the types available.

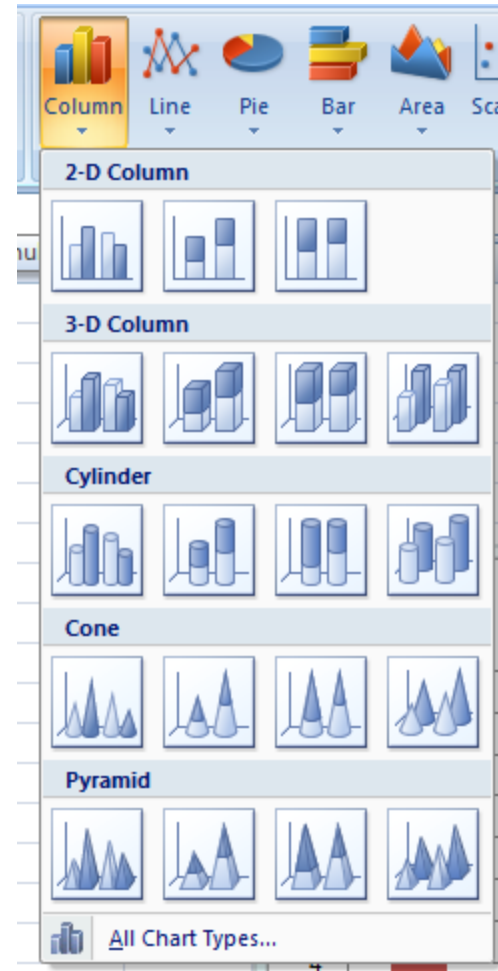


Chart Wizard (3)

- **Step 4:** A new chart should have been added to your current worksheet. You can move the new chart by clicking-and-dragging it to a new location in the worksheet.

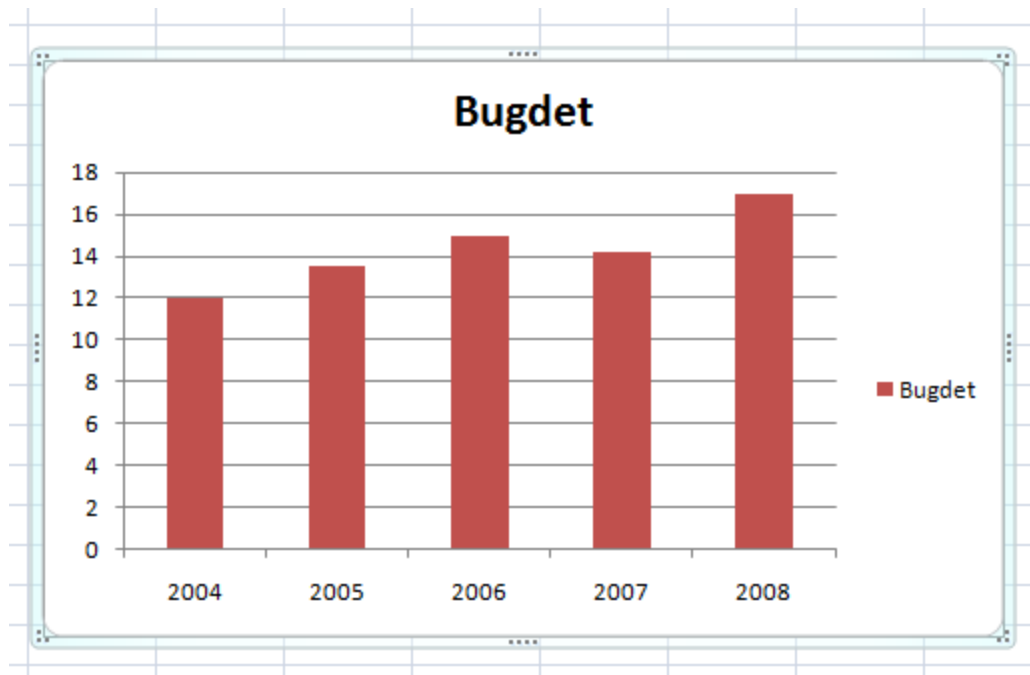


Chart Wizard (4)

- **Step 5:** Notice that new contextual menus have appeared under the main toolbar. These contextual menus allows for customization to be performed to the chart

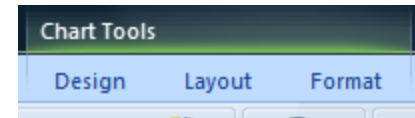


Chart Types (1)

	A	B	C	D	E
1		Q1	Q2	Q3	Q4
2	Food	600	650	550	700
3	Rent	800	700	750	900
4	Transportation	200	150	100	200

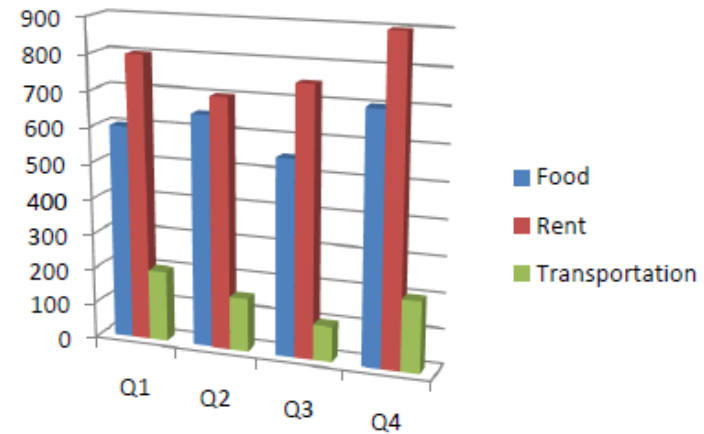
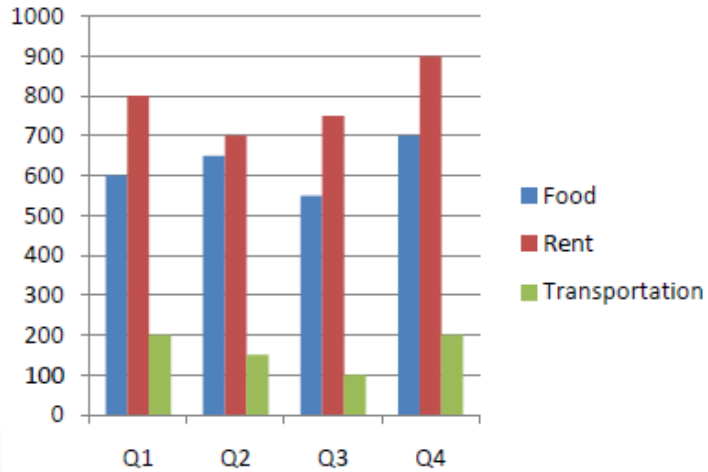
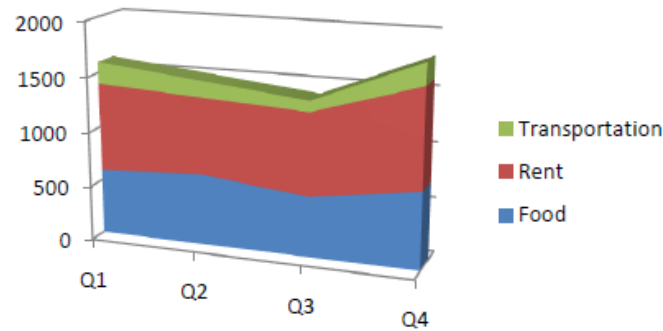
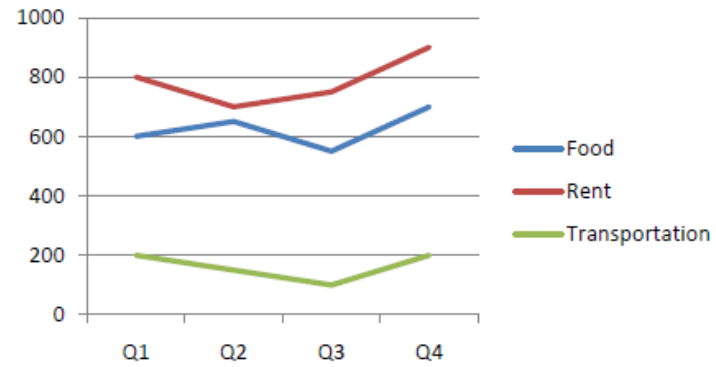
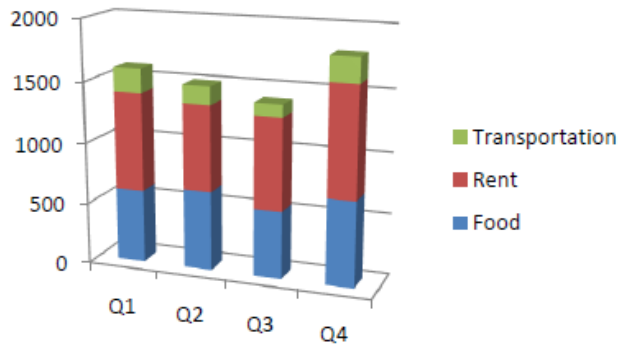


Chart Types (2)



Customizing a Chart (1)

- Chart elements:
 - chart area
 - plot area
 - data source
 - horizontal/vertical axis
 - legend
 - title
 - data label

Customizing a Chart (2)

- **Step 1:** Select the chart.
- **Step 2a:** The **Chart Tools** menu is added to the menu bar with the three items: **Design**, **Layout**, and **Format**; Or
- **Step 2b:** Right-click a chart element and select **Format <element name>** from the drop down menu.

Chart Design Principals (1)

- 6 principals of visual display of information according to Edward Tufte:
 - Maximize Data Ink
 - Minimize Chart Junk
 - Use Small Multiples to deal with Complexity
 - Data Density
 - Multiple Use
 - Aesthetics

Creating Good Charts:

<http://lilt.ilstu.edu/gmklass/pos138/datadisplay/sections/goodcharts.htm>

Chart Design Principals (2)

Stephen Few's 13 Mistakes in Dashboard Design:

- Exceeding the Boundaries of a Single Screen
- Supplying Inadequate Context for the Data
- Displaying Excessive Detail or Precision

Chart Design Principals (2)

Stephen Few's 13 Mistakes in Dashboard Design:

- Choosing a Deficient Measure
- Choosing an Inappropriate Display Media
- Introducing Meaningless Variety
- Using Poorly Designed Display Media

Chart Design Principals (2)

Stephen Few's 13 Mistakes in Dashboard Design:

- Encoding Quantitative Data Inaccurately
- Arranging the Data Poorly
- Highlighting Important Data Ineffectively or Not at All
- Cluttering the Display with Useless Decoration
- Misusing or Overusing Color
- Designing an Unattractive Visual Display